

Furnace #1 & #2 - Bryant 398AAZ060-100, Hi-Efficiency Gas.
Input=110 MBH. Output=102 MBH. 2000 CFM @ .5"
S.P. 150 CFM Outside Air. 115 Volts. 3/4 HP.
14.2 Amps. With 5 ton Evaporator Coil.
State Approval # 910115-H

Condensing Unit #1 & #2 - Bryant 593A-060-A, 5 ton unit
208/230. 60-single phase. 37.4 Amps.

Electric Wall Heater #1 - Broan 170. Output=1.707/3.413 MBH.
.5/1.0 KW. 120/60/1

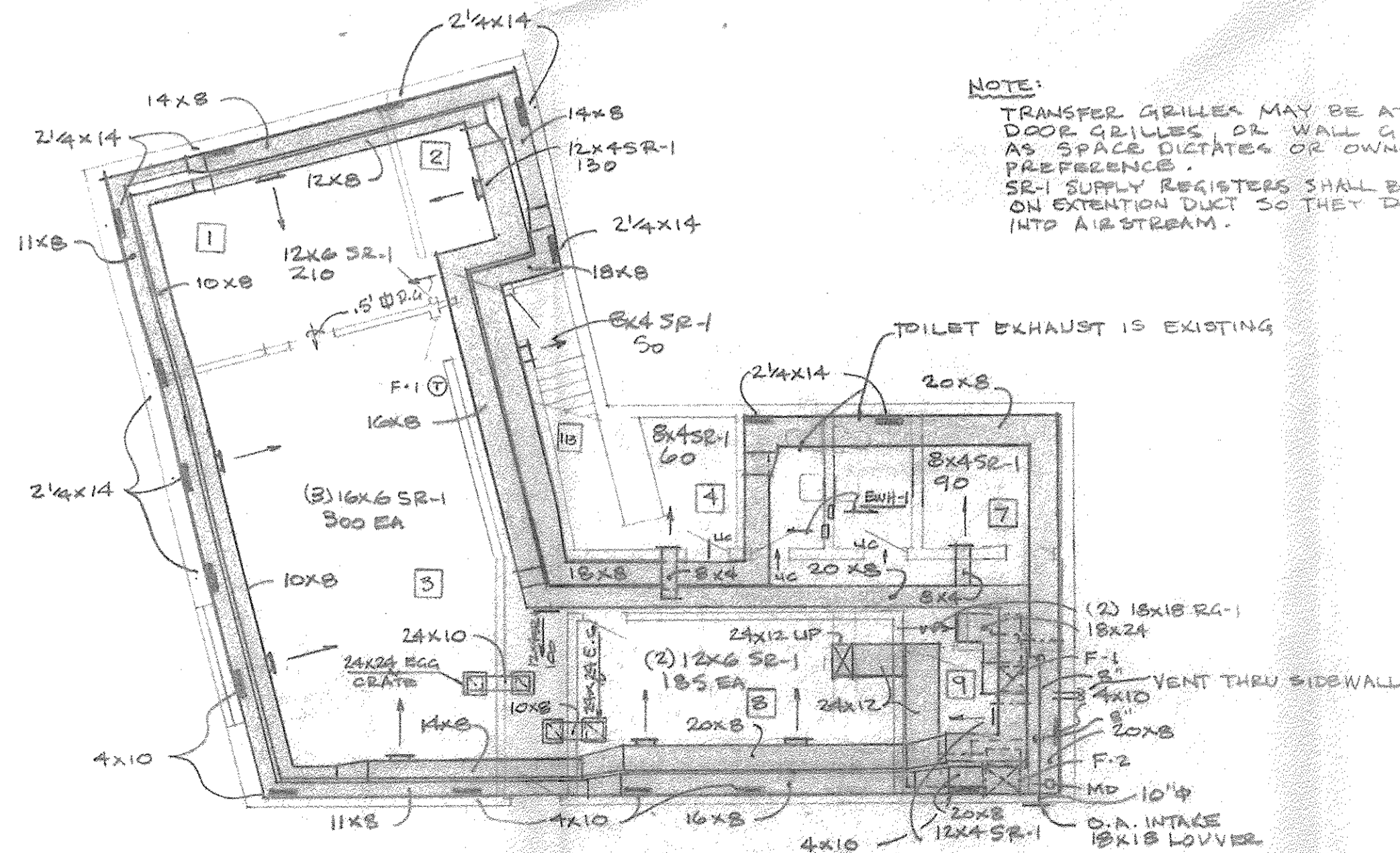
Electric Wall Heater #1 - Broan 194. Output=3.8/7.6 MBH.
1.125/2.25 KW. 208/60/1, (1000/2000 W @ 240/60/1)

NOTE: PLEASE CONFIRM ELECTRICAL CHARACTERISTICS ON ALL OF
THE ABOVE EQUIPMENT.

RG-1 - Hart & Cooley #872 Return Grilles
SR-1 - Hart & Cooley #93V0V Supply Registers
FR-1 - Hart & Cooley #411 Floor Supply Registers

ABBREVIATIONS:
CFM Cubic feet/min.
MD Motorized Damper
VCD Manual Damper
BDD Backdraft Damper
OA Outside Air
AFF Above-Finished Floor
UC Undercut 1" min.

NOTES:
All work shall be in strict accordance with Wisconsin State Codes.
Insulate all ductwork that is not in the conditioned space.
Ductwork sizes shown are finished inside dimensions.
Run condensate to nearest floor or hub drain.



NOTE:
TRANSFER GRILLES MAY BE AT CLG,
DOOR GRILLES OR WALL GRILLES
AS SPACE DICTATES OR OWNER
PREFERENCE.
SR-1 SUPPLY REGISTERS SHALL BE MOUNTED
ON EXTENSION DUCT SO THEY DON'T PROJECT
INTO AIR STREAM.

Date: 4/1/93 Scale: 1/8" = 1'-0" Drawn by: DWS

Project:
Wis. Conf. UCC Office
27 Marshall Ct.
Madison, WI 53705

Warren Htg & AC
303 S. Patterson St.
Madison, WI 53703

M-1